

高速流动混合机 HIGH SPEED FLUIDIZING MIXER

SUPERMIXER SMseries

川田独创的构思浓缩而成的高速流动混合机!

SUPERMIXER, High Speed Fluidizing Mixer, Full of Kawata's Original Ideas for Uncompromising Quality.



快速，稳定处理

Fast and stable process

- 短时间内均匀混合
- Uniform mixing in a short time

通用性高

High versatility

- 对各式各样的材料进行各式各样的处理 (混合·分散·造粒·粉碎·干燥·喷涂·表面处理等)
- Various processes (mixing, dispersion, pelletizing, granulation, drying, coating, surface treatment, etc.) suitable for each material

容量选择范围大

Wide range of models

- 针对用途及处理量，丰富的机种变化
- Selection of sizes depending on your purpose and desired throughput

维护简单

Easy cleaning

- 考虑清扫性，保养性的机械构造
- Structure with high maintainability

丰富的规格

Detailed customization

- 丰富多样的对应 (耐磨损式样，减压式样，搅拌机，加热组合，冷却组合等)
- Extensive options (abrasive resistance, decompression, chopper, heating / cooling unit, etc.)

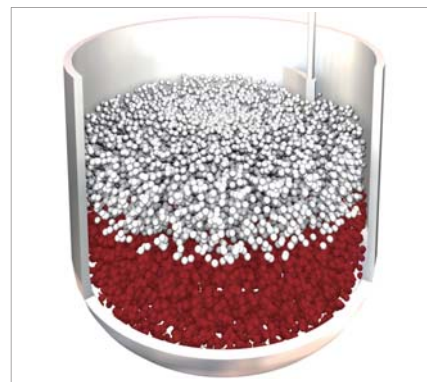
混合图示 / Mixing Image

混合初期，下桨叶将底部材料沿筒向上悬浮。之后，在混合进行中，通过横方向的运转和导向板及上桨叶的叠加效果，使筒内材料上下流动。这就是“短时间均匀混合”的原理。
In the early stage of mixing, material is churned up to the upper part of the tank by the lower blade. Then, as the mixing action proceeds, the material moves up and down within the tank by transverse rotation and in synergy with the guide plate and upper blade. This is the principle of "uniform mixing in a short time."

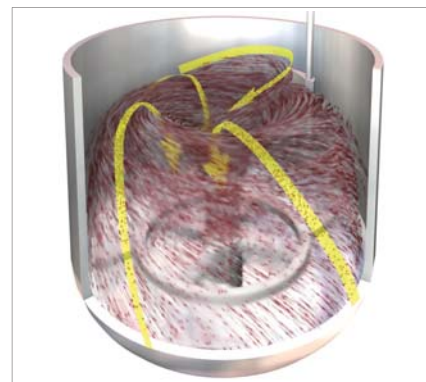
初期混合
Initial mixing



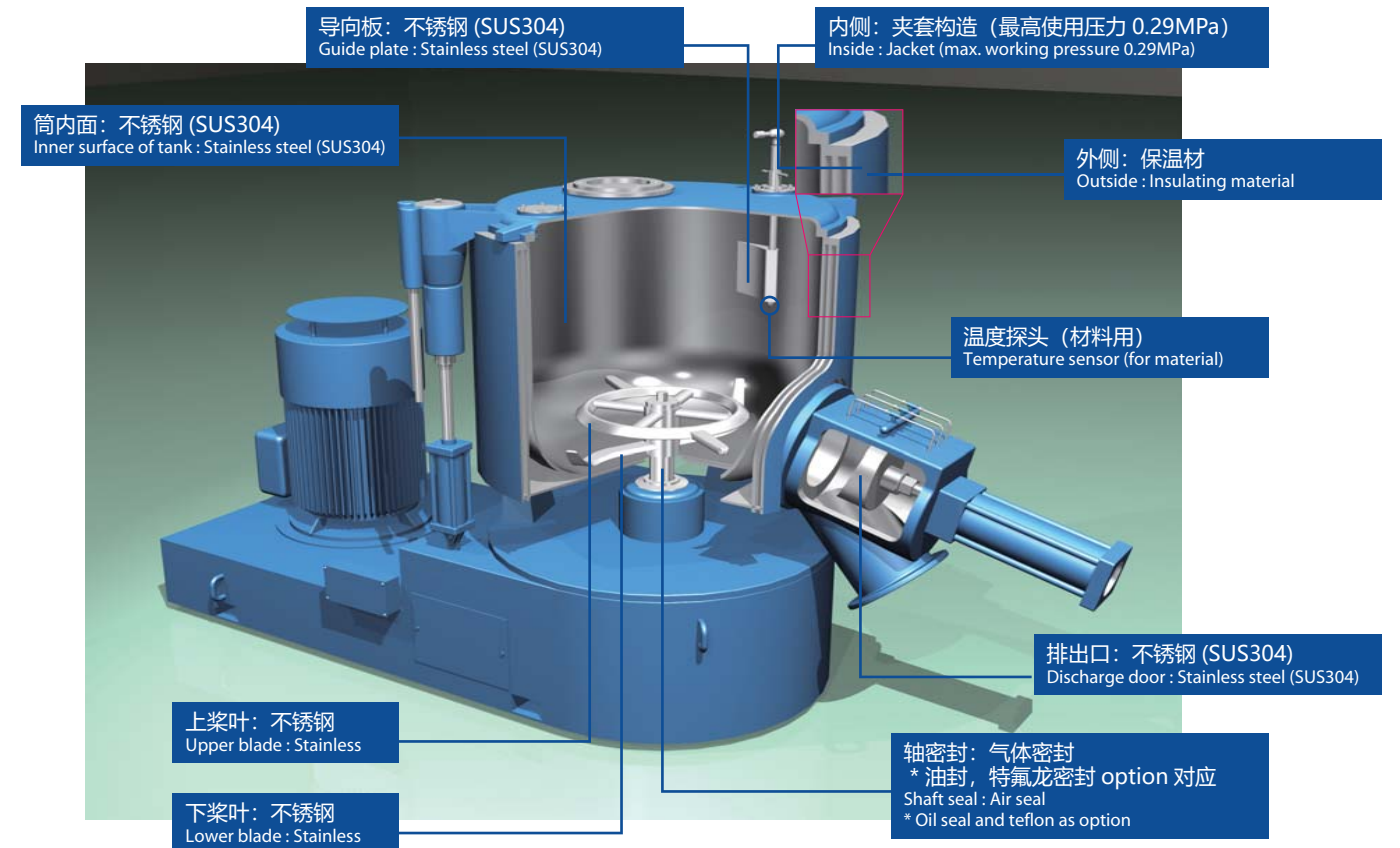
静止状态
Non-operating



高速混合
High-speed mixing



充实的标准规格 / Full Standard Specifications



按各种用途设置的搅拌桨叶是高速流动混合机的关键 / Customized agitating blades are the key to SUPERMIXER

上桨叶 Upper Blades

作用 Function 对浮动的材料进行多样的处理/
Role: To provide various processes to churned-up material

S型 S type
广泛性，混合分散性良好
General-purpose type with good performance in mixing and dispersion



SI型 SI type
适用于比重轻或流动性差的材料
Suitable for light-weight or low-fluidity material



V型 V type
主要适合液体或粘性大的材料
Suitable for liquid or strong-viscosity material



3段型 Triple type
最适合剪切效果大，造粒等
Large cutting force suitable for granulation



下桨叶 Lower Blades

作用 Function 材料悬浮
Role: To churn up material

E型

D型

BL型标准

B型

A型



SM series 根据能力不同, 提供5种不同的机型

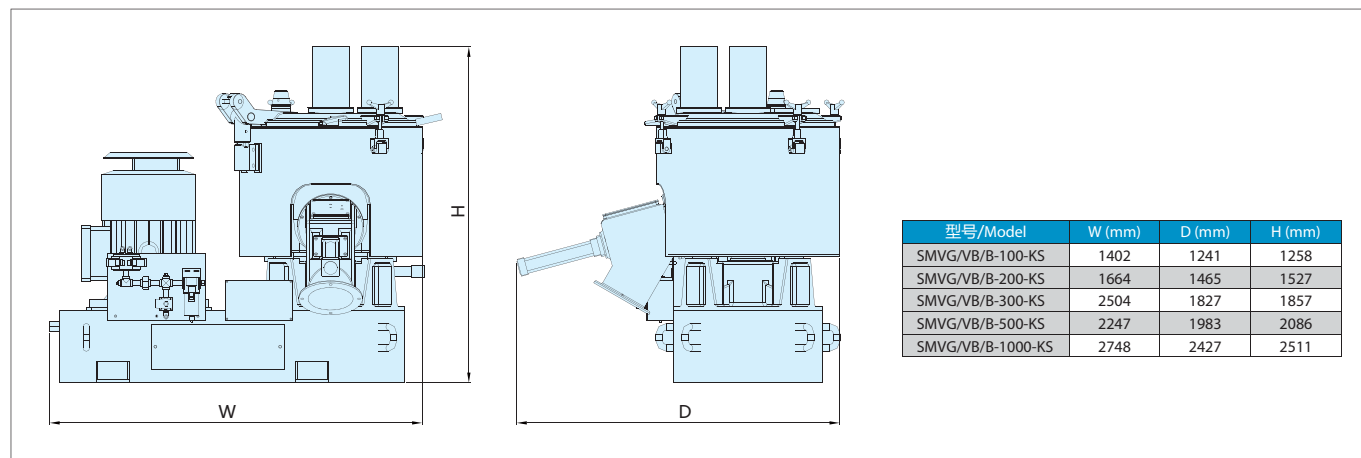
5 Models to Meet Growing Demand

规格 Specifications

类型/Type	型号/Model	筒体全容量/Tank capacity (L)	装料量/Charged volume (L)	电机/Motor (kW)	空气消耗量/Air consumed ANR (L/min)	接管口径/Pipe size	夹层容量/Jacket (L)	主断路器容量/Main breaker capacity (A)	总电气容量/Power supply (kW)	机器重量/Weight (kg)	
变频式样/ Inverter type	SMVB-100-KS	100	60~70	5.5 6P Inverter	32	20A	20	20	6	760	
	SMVB-200-KS	200	120~140	11 6P Inverter	43		49	50	11.5	970	
	SMVB-300-KS	300	180~210	22 6P Inverter	66		73	100	22.5	1550	
	40A	SMVB-500-KS	500	300~350	37 6P Inverter	86	79	150	37.5	2250	
		SMVB-1000-KS	1000	600~700	75 6P Inverter	100	153	225	75.5	5000	
		SMVG-100-KS	100	60~70	22 4P Inverter	32	20A	20	100	22.5	870
		SMVG-200-KS	200	120~140	37 4P Inverter	43		49	150	37.5	1170
	SMVG-300-KS	300	180~210	55 4P Inverter	66	73		175	55.5	1750	
	SMVG-500-KS	500	300~350	75 4P Inverter	86	79		225	75.5	2400	
40A	SMVG-1000-KS	1000	600~700	160 4P Inverter	100	153	400	161	5500		
混合式样/ Blending type	SMB-100-KS	100	60~70	5.5 6P	32	20A	20	20	6	760	
	SMB-200-KS	200	120~140	11 6P	43		49	40	11.5	970	
	SMB-300-KS	300	180~210	22 6P	66		73	80	22.5	1550	
	40A	SMB-500-KS	500	300~350	37 6P	86	79	125	37.5	2250	
		SMB-1000-KS	1000	600~700	75 6P	100	153	250	75.5	5000	

※ 1.在标准 (L-型) 的轴密封是特氟隆的情况下, 外形尺寸为近似尺寸。/ The above are approximate outer dimensions when Teflon is used for standard (L-type) axial seal.
 ※ 2.使用的空气压力为0.4~0.6MPa。/ Used air pressure is 0.4~0.6MPa

外形尺寸图 Dimensions



多样的选配规格 Extensive Options

标准规格/Standard Specifications	选配规格/Optional Specifications	标准规格/Standard Specifications	选配规格/Optional Specifications
<p>上盖打开方式: 气缸顶起, 手工侧旋打开 Opening: Elevated by air cylinder and slid side ways manually *SM-20, 100, 200为手动打开方式 SM-20,100 and 200: manual opening</p>	<p>气缸上翻式上盖 Flip-up lid</p>	<p>按钮型 Button type</p>	<p>触摸型 Touch type</p>
<p>采用夹层构造 /Jacket structure *最高使用压力/Maximum working pressure: 0.29MPa (3kg/cm²)</p>	<p>接料部 WC 镀层 / Contact surface WC coating</p>	<p>夹层部分 Jacket</p>	<p>冷却单元 Cooling unit</p> <p>加热单元 (媒体: 水) Heating unit (water medium)</p> <p>加热单元 (媒体: 油) Heating unit (oil medium)</p>

SUPERMIXER

SMV-10/20B

高速流动混合机

HIGH SPEED FLUIDIZING MIXER

用于研究、开发用的混合机, 满足各种粉粒体的制造需求

It is a Mixer for Research and Development Suitable for Mixture and Dispersion of various Powder/Grain Production

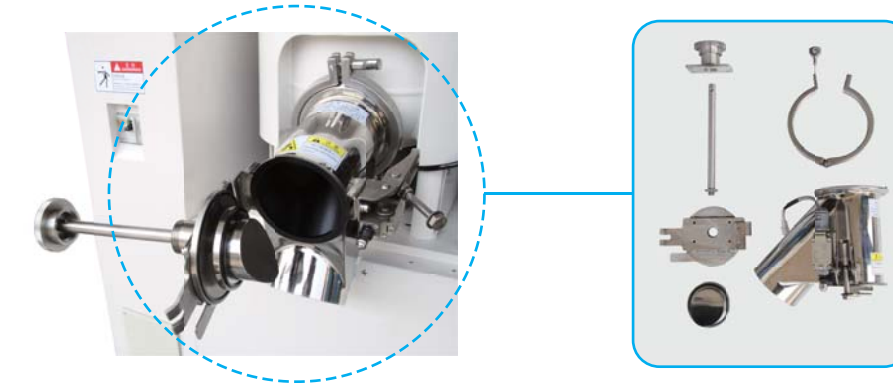
采用变频器构造, 可任意设定桨叶的回转数

Any Rotational Speed of Blades by the Adoption of Inverter

易清扫, 易保养。排出部拆卸简便, 可水洗

Quick Cleaning and Maintenance; e.g. Easily Dismantled and Washable Discharge Parts

- 接触材料部均为不锈钢(SUS304)
- 排出口采用铰链开关式, 方便打开, 便于清扫
- All stainless steel (SUS304) at material contact area
- The discharge door adopts hinge opening and shutting type, easily disassemble



接材料部全部采用 SUS304

Entire Material Contact Surface of SUS304

带脚轮便于移动

Easy Shifting with Wheel Caster

规格 Specifications

型号/Model	SMV-10B-KS	SMV-20B-KS
筒体全容量/Tank capacity (L)	10	20
装料量/Charged volume (L)	6~7	12~14
电机/Motor (kW)	4 4P Inverter	5.5 4P Inverter
空气消耗量/Air consumed ANR (L/min)	16	
接管口径/Pipe size	10A	
夹层容量/Jacket (L)	3	5
主断路器容量/Main breaker capacity (A)	20	
总电气容量/Power supply (kW)	4.3	5.8
涂装色/Paint color	日塗工 Y15-85A 半艶 JPMA Y15-85A, semigloss	
机器重量/Weight (kg)	200	250

外形尺寸图 Dimensions

